



HOTEL NEW OTANI MAKUHARI

The ideal venue to ensure a successful event



HOTEL NEW OTANI MAKUHARI



Hotel New Otani Makuhari is an urban resort hotel located in the Makuhari area of Chiba city,
known for the international convention center Makuhari Messe.
Convenient access, functionality, and genuine hospitality combined with
extensive facilities that include “Club & Club”,
one of Japan’s largest sports and relaxation facilities, offer the ideal setting for any event.

A Tokyo Disney Resort® Good Neighbor Hotel

Direct bus services take hotel guest to Tokyo Disneyland® and Tokyo DisneySea®.
(Reservations are required.)



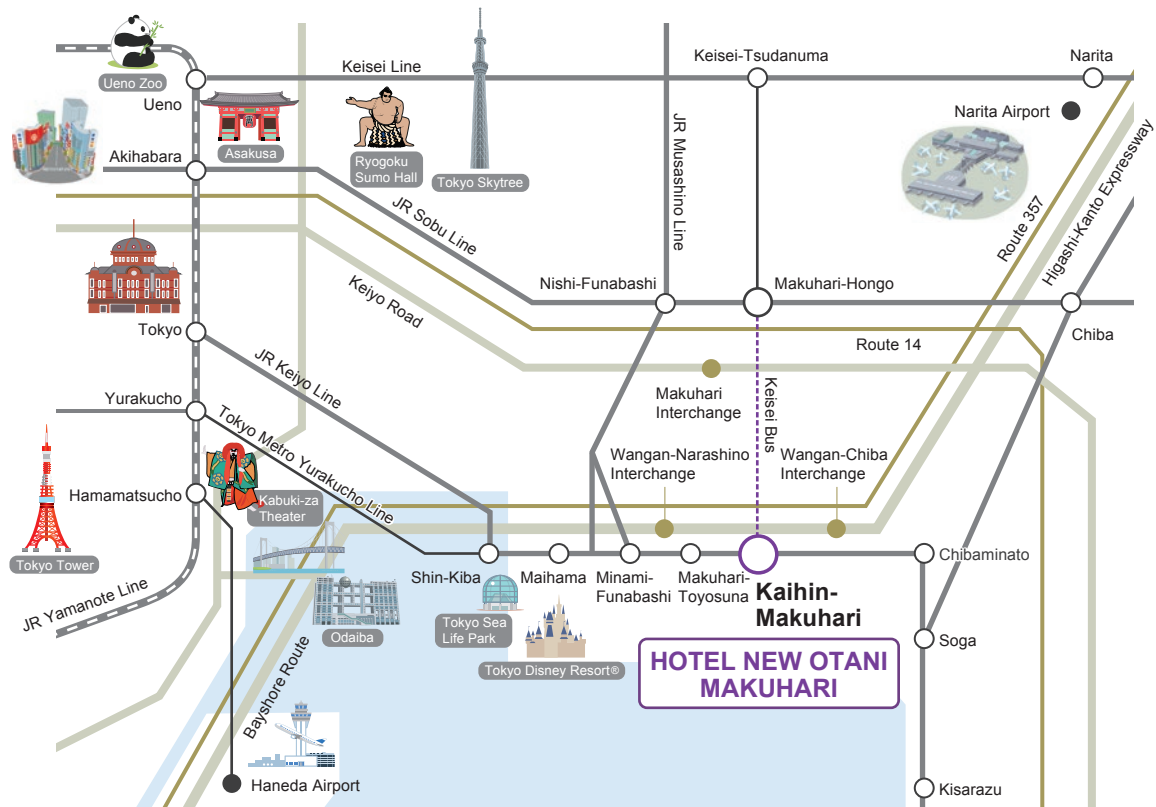
Outdoor Pool “Shell Pool” (Seasonal operation)

Sit back in a deck chair or take a dip in the water in the tropical resort
ambience where the gentle breeze caresses the palm trees.



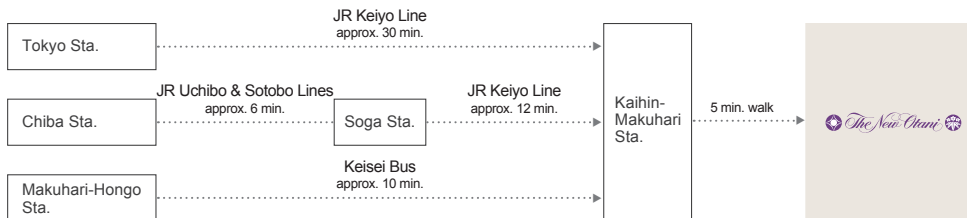
Getting here

Just 30 minutes by rapid train from central Tokyo and perfectly located for business or pleasure.

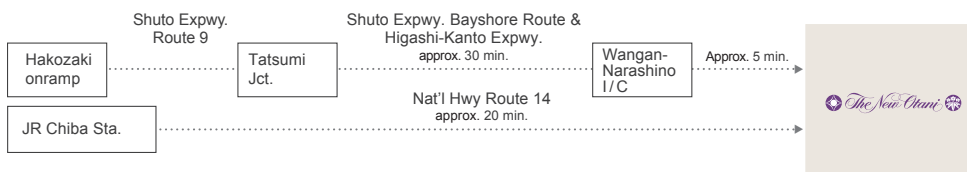


By train

Approx. 5 min. walk from Kaihin-Makuhari Sta. (south exit), JR Keiyo Line



By car / taxi

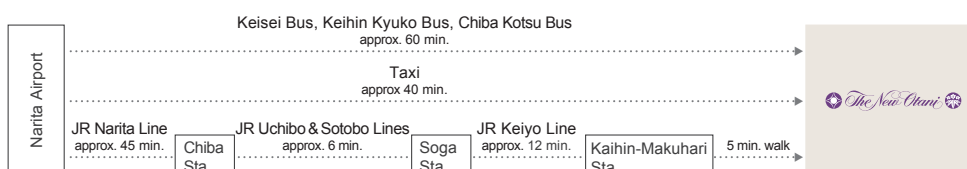


*Required times vary depending on traffic conditions.

From Haneda Airport



From Narita Airport



Airport Limousine Bus

The Airport Limousine Bus service running between Haneda and Narita airports stops at our hotel.

Bus stop location:
East Entrance (Lobby floor)
Inquiries:
Bell Captain's Desk (Lobby floor)
043-297-7777 (via operator)

Parking

Approx. 300 spaces
First hour: ¥1,000
(¥500/each additional 30 min.)
Parking is free for staying guests from check-in to check-out. Bus parking spaces are also available. (Advance notice required.)

Guestrooms

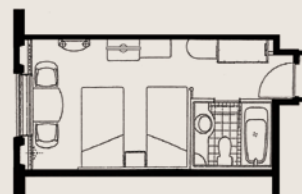
Standard Rooms



Standard Twin/Double

26m² and up 162 rooms

The spacious layout and enhanced facilities of the Standard rooms ensure a comfortable stay and a good night's rest.



*Room plan varies according to the room.

Moderate Rooms



Moderate Twin/Double

36m² and up 144 rooms

Commodious and generously appointed, the Moderate rooms are furnished to maximize your comfort.



*Room plan varies according to the room.

Superior Rooms



Superior Twin/Double

40m² 49 rooms

Located on high floors, the Superior rooms afford breathtaking views of the ocean from the bay window that refreshes your mind, body, and soul.



*Room plan varies according to the room.

Superior Corner Rooms



Superior Corner Twin/Double

51m² 26 rooms

With plenty of sunlight, the vivid color schemes of the Superior Corner rooms create the ambience of a warm and relaxing resort.



*Room plan varies according to the room.

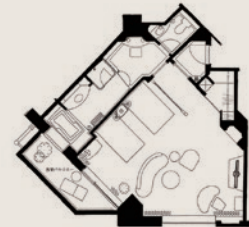
Suites



Balcony Suites

64m² 21 suites

Feel the pleasant ocean breeze from the balcony of this stylish suite. The stunning view can also be enjoyed from the bathtub.



*Other suite types are also available.



Breakfast buffet at SATSUKI

Oven-fresh bread and fluffy omelets – start the day with an impressive buffet that includes a wide selection of Japanese, Chinese, and Western items.



Room Service

Dine in the peaceful privacy of your room, with delectable dishes prepared by our chefs and exquisite sommelier-selected wines.



Restaurants & Bars

10 restaurants and bars within the hotel offer the cuisine and ambience of your choice – Japanese, Western, and Chinese; from casual to fine dining. (Please visit our website for current hours.)

All Day Dining

SATSUKI



Breakfast, casual meals, coffee and cakes.

Hours: 6:30-21:00
Capacity: 82 seats
Private rooms: 2
Location: Lobby floor

Japanese Cuisine

Senbazuru



Seasonal dishes and elaborately prepared course menus.

Hours:
Lunch 11:30-14:00
*Until 14:30 on weekends and public holidays
Dinner 17:00-20:30
Capacity: 48 seats
Location: Lobby floor

Sazanka (Exquisite Kaiseki Cuisine)



The finest Japanese cuisine offered Kaiseki course style in traditional tatami-floored private rooms.

Hours:
Lunch 11:30-14:00
*Until 14:30 on weekends and public holidays
Dinner 17:00-20:30
Private rooms: 4
Location: Lobby floor

Isshin (Sushi)



Counter-style restaurant offering haute sushi prepared to order.

Hours:
Lunch 11:30-14:00
*Until 14:30 on weekends and public holidays
Dinner 17:00-20:30
Capacity: 12 seats
Location: Lobby floor

Chinese Cuisine

TAIKAN EN



Authentic Shanghai cuisine served in a stylish and elegant décor.

Hours:
Lunch 11:30-14:30
Dinner 17:00-21:00
Capacity: 66 seats
Private rooms: 4
Location: Lobby floor

Teppanyaki Grill

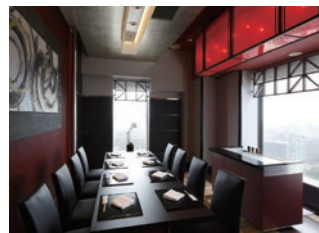
Keyaki



Watch the seasoned chefs at work as they cook wagyu steaks and fresh seafood to perfection right before your eyes.

Hours:
Lunch 11:30-14:00
Dinner 17:30-21:30
Capacity: 21 seats
Location: 24th floor

Sky Salon Keyaki (Reservation required)



Succulent wagyu beef and prime seafood prepared and served within a private setting.

Hours:
Lunch 11:30-14:00
Dinner 17:30-21:30
Private rooms: 2
*Available to groups of 4 or more
Location: 24th floor

Bread and cakes

Patisserie SATSUKI



A cake shop offering an extensive array of pastries, confections, and breads.

Hours: 10:00-20:00
Location: Lobby floor

Lounge and Bar

The Lounge



A sunlit lounge where you can sit down for tea and cakes, or enjoy the popular sandwich and dessert buffet.

Hours: 11:30-18:00
*Open until 20:00 on buffet nights
Capacity: 100 seats
Location: Lobby floor

Bay Court Café



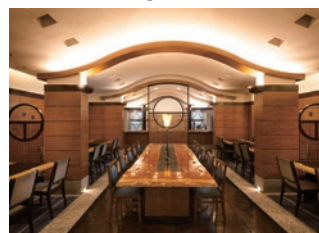
Delightful afternoon tea sets, original cocktails, and light meals.

Hours: 11:30-22:00
Capacity: 48 seats
Location: 24th floor

Party space

Tokio

(Reservation required)



Available for private parties and events offering contemporary Japanese menus.

Capacity: 50 seats
Location: Lobby floor

Meetings & Banquets

A wide range of different sized venues are available to suit any type of event, be it a small gathering or a substantial international convention.



Tsuru



Sirius



Shell House

Large - sized Rooms

Venue	Location (floor)	Area (m ²)	Capacity			
			Seated Dinner	Standing Buffet	Classroom	Theater
Tsuru	2	1,322	880	1,500	900	1,786
East / West	2	661	330	750	396	836
Rei	2	331	160	250	198	360
Yu	2	330	160	250	198	360
Mai	2	330	160	250	198	360
Sho	2	331	160	250	198	360
Foyer	2	760	—	—	—	—

Medium - sized Rooms

Venue	Location (floor)	Area (m ²)	Capacity			
			Seated Dinner	Standing Buffet	Classroom	Theater
Lapis	2	340	160	250	192	392
Stella	2	201	90	120	108	224
Sirius	24	140	40	70	—	—

Small - sized Rooms

Venue	Location (floor)	Area (m ²)	Capacity			
			Seated Dinner	Standing Buffet	Classroom	Theater
Sumire	2	82	40	50	36	60
Yuri	2	82	40	50	36	60
Suisen	2	110	40	50	36	60
Aries	24	70	16	—	—	—
Crescent	24	34	14	—	—	—

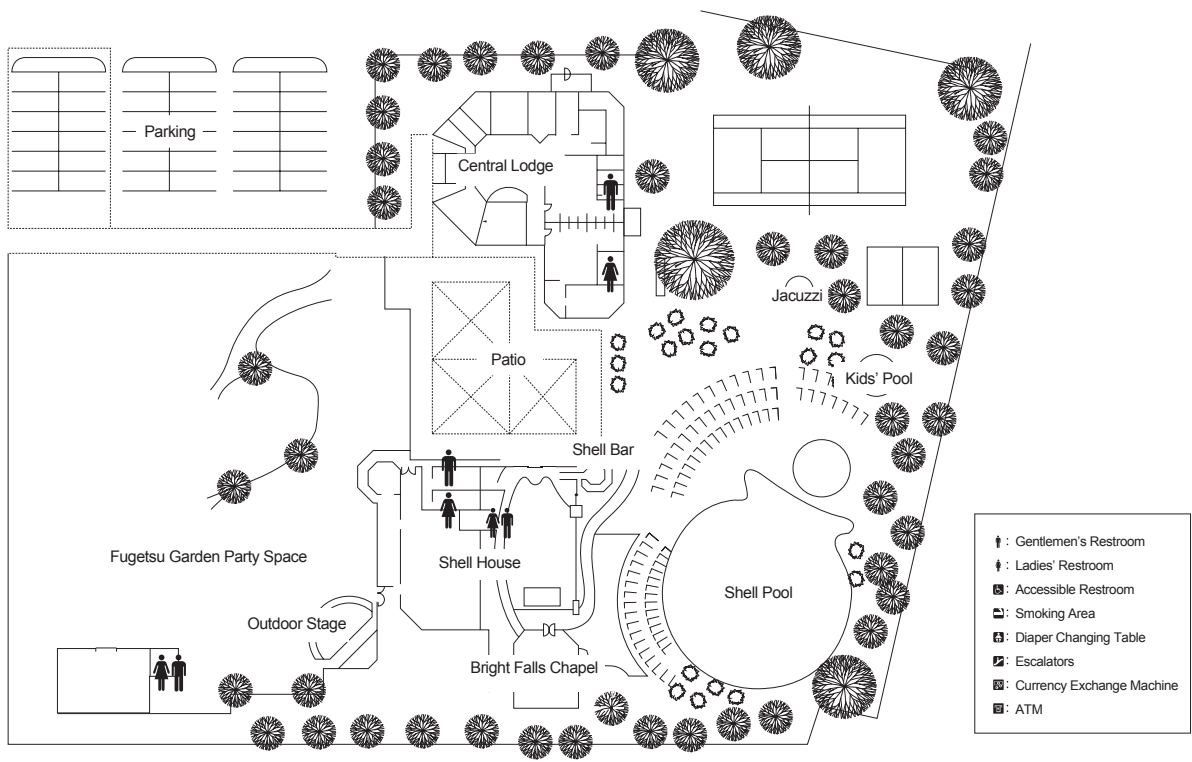
3rd-floor Meeting Rooms

Venue	Location (floor)	Area (m ²)	Capacity			
			Seated Dinner	Standing Buffet	Classroom	Theater
Sakura	3	45	—	—	13	—
Tachibana	3	45	—	—	13	—
Tsubaki	3	45	—	—	13	—
Kotobuki	3	26	—	—	—	—
Matsu	3	21	—	—	—	—
Ume	3	24	—	—	—	—

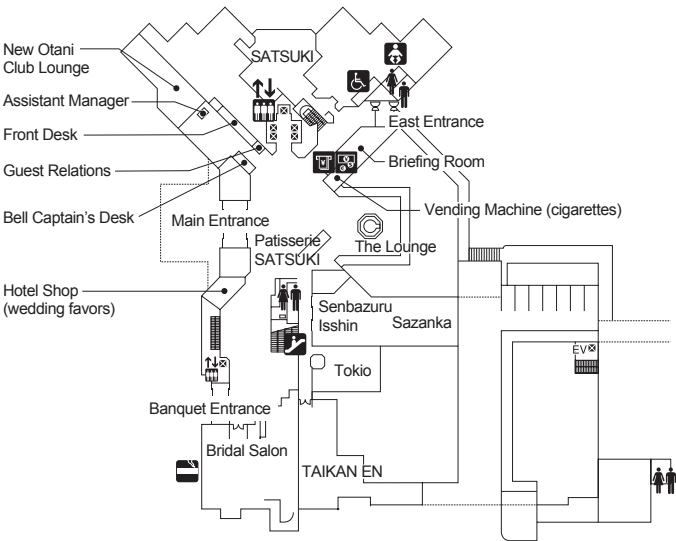
Garden Party Venues

Venue	Location	Area (m ²)	Capacity			
			Seated Dinner	Standing Buffet	Classroom	Theater
Shell House	Garden	223	90	150	—	—
Central Lodge	Garden	110	—	—	—	—
Patio	Garden	600	—	—	—	—
Fugetsu (Garden space)	Garden	3,000	—	—	—	—
Shell Pool Zone	Garden	300	—	—	—	—

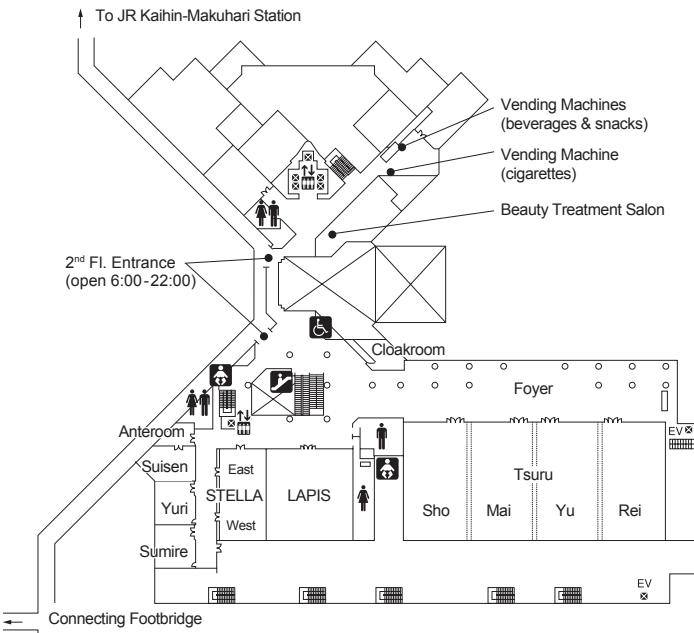
Garden



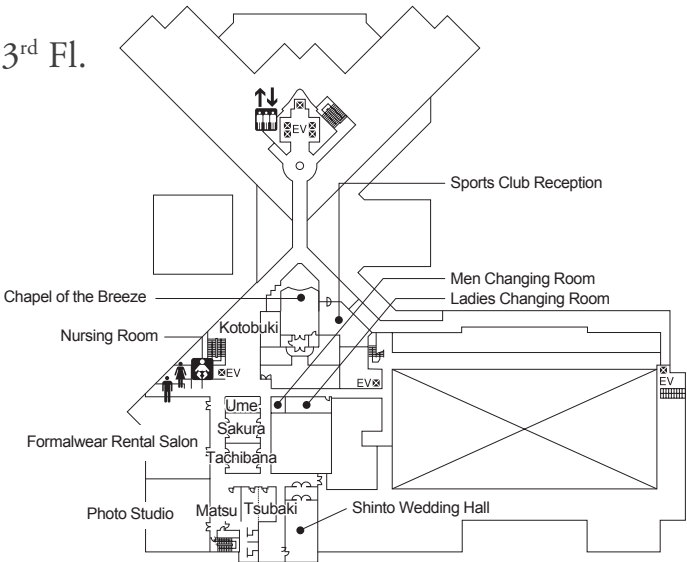
Lobby Floor (1st Fl.)



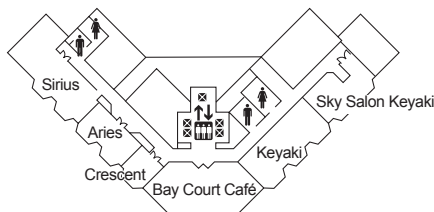
Banquet Floor (2nd Fl.)



3rd Fl.



24th Fl.



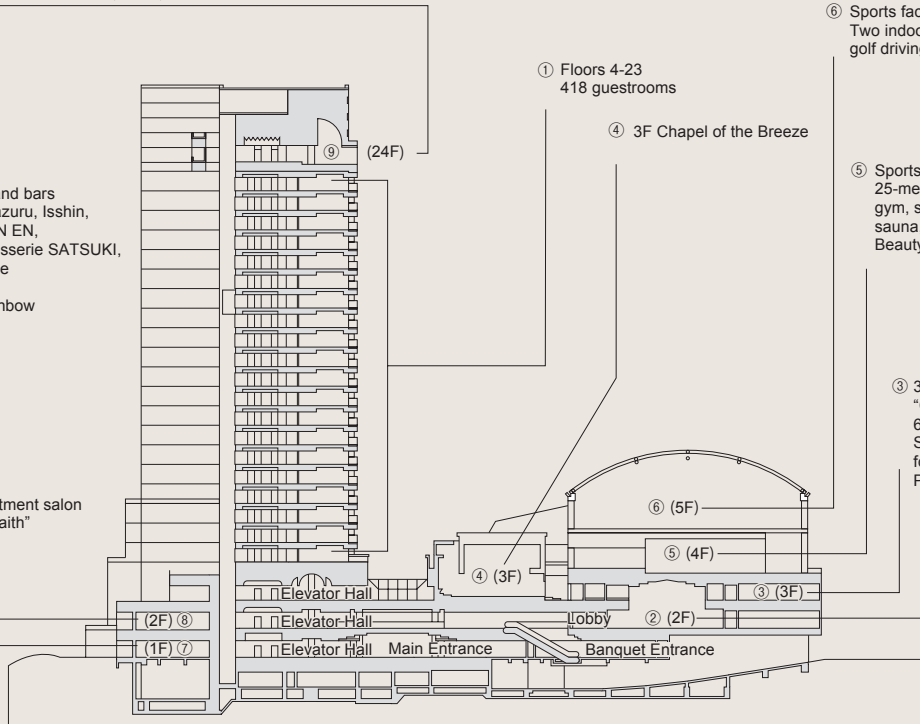
Facilities

The hotel complex houses a grand array of facilities for a convenient and enjoyable stay.

- ⑨ 24F Restaurants and bars
Keyaki, Sky Salon Keyaki, and Bay Court Café
Penthouse banquet rooms Sirius, Aries, and Crescent

- ⑦ 1F Restaurants and bars
SATSUKI, Senbazuru, Isshin,
Sazanka, TAIKAN EN,
The Lounge, Patisserie SATSUKI,
Tokio Party Space
New Otani Shop,
Flower Shop Rainbow

- ⑧ Beauty treatment salon
"Trinté by Faith"



- ⑥ Sports facility "Club & Club"
Two indoor tennis courts and
golf driving range

- ⑤ Sports facility "Club & Club"
25-meter indoor swimming pool, jacuzzi,
gym, studio, relaxation room, bathroom,
sauna, and restaurant
Beauty salon

- ③ 3F Sports facility
"Club & Club" reception
6 conference rooms, nursing room,
Shinto wedding hall, and
formalwear rental salon
Photo studio

- ② 2F Banquet rooms
Tsuru, Lapis, Stella, Sumire,
Yuri, and Suisen

Club & Club (3rd Fl.)



Indoor Pool

A glass-ceilinged space flooded with sunlight during the day, this is not just a place to swim. Lie down on a deckchair with a book, or gaze down at the city from the poolside jacuzzi; such moments should be just as rejuvenating.



Gym

Equipped with a wide array of exercise machines, this is the perfect environment for a good workout during your stay. Instructors stand by to offer advice, assistance, and ideas for personalized routines anytime.



Bathhouse and Sauna

A spacious hot tub, waterfall showers, and dry and mist saunas. Take your pick, relax and enjoy.

Other Facilities



Flower Shop Rainbow (1st Fl.)

Custom-made bouquets and flower arrangements are available.



New Otani Shop (1st Fl.)

Offers a wide selection of wines and other beverages, processed foods, confections, bath goods, and gifts.



Photography Studio (3rd Fl.)

Portraits for any occasion, whether it is an important family celebration, resume photo, or an informal snapshot.

Our Vicinity

A multitude of attractions are available in the surrounding area



ZOZO Marine Stadium

Home to the professional baseball team Chiba Lotte Marines, this stadium is equipped with state-of-the-art facilities. It is also available for concerts and other outdoor events.

- 10-minute walk from the Hotel



Mihama-en

A Japanese garden featuring a scenic koi pond and beautifully recreated landscapes. The on-site tea room offers matcha with Japanese sweets, and can also be used as a venue for authentic tea ceremony experiences.

- 2-minute walk from the Hotel



Mitsui Outlet Park Makuhari

A shopping mall consisting of around 140 outlet stores that include cutting-edge Japanese and international fashion brands, sportswear and goods, cafes, restaurants, and more.

- 3-minute walk from the Hotel



Aeon Mall Makuhari New City

You can spend the whole day here at this enormous shopping facility, with about 360 specialty stores, a cinema multiplex, various sports facilities, and a wide selection of restaurants and cafes.

- 15-minute walk from the Hotel
- 1 minute from Makuhari-Toyosuna station



The New Otani
NEW OTANI HOTELS

Hotel New Otani Makuhari, Hotel New Otani Tokyo, Hotel New Otani Osaka, New Otani Inn Sapporo, Hotel New Otani Nagaoka, NASPA New Otani (Echigo-Yuzawa), Yuzawa New Otani, New Otani Inn Tokyo (Osaki), New Otani Inn Yokohama Premium, Hotel New Otani Takaoka, Hotel New Otani Tottori, Hotel New Otani Hakata, Hotel New Otani Saga, Hotel New Otani Chang Fu Gong (Beijing)
[Associate hotels] Hotel Italiaken (Niigata), Kanazawa New Grand Hotel

The New Otani
HOTEL NEW OTANI MAKUHARI

2-120-3, Hibino, Mihama-ku, Chiba 261-0021, Japan Tel: +81-43-297-7777 Fax: +81-43-297-7788

www.newotani.co.jp/en/makuhari/

