

HOTEL NEW OTANI TOKYO

Gastronomic Experiences in Japan



Sushi, Tempura & Teppanyaki

The panoramic lounge that capped the building when the hotel opened in 1964 is now buffet restaurant THE SKY, offering freshly prepared tempura, sushi, teppanyaki and much more in a style that embodies New Otani's dining experience.

VIEW & DINING THE SKY [Buffet Dining]

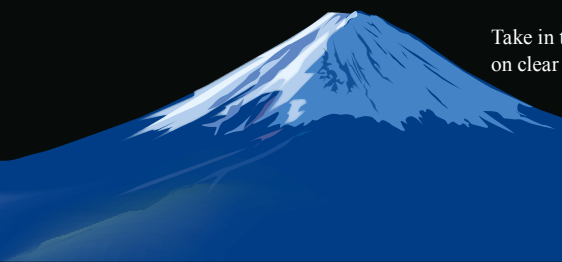
Weekdays 11:30am-3:00pm (last entry 1:00pm)

& 5:30pm-9:00pm (last entry 7:00pm)

*Hours differ for weekends and holidays. *A 2-hour limit applies.

Location: 17th fl, The Main bldg.

Take in the majestic view of Mt. Fuji
on clear days.





Buffet Dining with a View

The TOWER RESTAURANT boasts a buffet of delectable and wholesome dishes including New Otani's prided roast beef, vegan items, and delights created by our chefs.

TOWER RESTAURANT [Buffet Dining]

Weekdays: 11:30am-1:00pm (last entry) & 5:30pm-7:00pm (last entry)

*Hours are divided into segments, each with a 2-hour time limit.

Location: 40th fl, Garden Tower

The two buffet restaurants at Hotel New Otani Tokyo are both located on high floors and afford breathtaking views. Mt. Fuji is visible on clear days, with the greenery of the State Guest House and the Gaien area presenting a soothing vista by day, and the Tokyo nightscape glittering after dusk. The symbolic Tokyo Skytree can be seen from VIEW & DINING THE SKY.

The Tokyo cityscape against Mt. Fuji



Sushi

Highly acclaimed as one of the best sushi restaurants in Japan, KYUBEY serves exquisite sushi prepared according to traditional craftsmanship that is an art in itself.

KYUBEY [Sushi]

11:30am-2:00pm (last entry 1:30pm) & 5:00pm-9:30pm (last entry 9:20pm)

Location: Lobby fl, The Main bldg. & Lobby fl, Garden Tower

TSUKIJI SUZUTOMI presents a sophisticated dining experience with sushi made from carefully selected ingredients including exceptional tuna, in a refined atmosphere.

TSUKIJI SUZUTOMI [Sushi]

11:30am-3:00pm (last orders 2:30pm) & 5:00pm-10:00pm (last orders 9:00pm)

Location: 4th fl, Garden Court

Sushi is also available from the buffet at VIEW & DINING THE SKY.
(See cover page for restaurant details.)

Washoku Yoshoku Tempura Yakitori

Grilled unagi eels dipped in sweetened soy sauce served on rice is a common source of stamina in Japan.

KATO'S DINING & BAR [Japanese Cuisine]

11:30am-3:00pm & 5:00pm-10:00pm (last orders 9:00pm, 7:30pm for Kaiseki Course)

Location: Lobby fl, Garden Court

A wide array of "Yoshoku" dishes are available at SATSUKI, enhanced with high-quality ingredients and unique twists.

SATSUKI [All-day Dining]

7:00am-11:00pm (last orders 10:30pm)

Location: Lobby fl, The Main bldg.

A long-established restaurant serving authentic traditional Japanese cuisine. Another location stands in the Japanese garden: NADAMAN MAIN BRANCH SAZANKA-SO (Reservation required 3 days or more in advance).

Kioi NADAMAN [Japanese Cuisine / Tempura]

11:30am-2:30pm (last orders 2:00pm) & 5:00pm-9:00pm (last orders 8:00pm)

Location: Lobby fl, Garden Tower

Tempura has always been one of the most well-known Japanese dishes among foreign visitors. Savor fresh seafood and vegetables of the season encrusted in crispy batter.

HORIKAWA [Tempura]

11:30am-3:00pm (last orders 2:30pm) & 5:00pm-9:30pm (last entry & last orders 8:30pm)

Location: Lobby fl, The Main bldg.

A yakitori restaurant chain with a history of nearly a century. Select ingredients are grilled with the greatest care over high-quality charcoal that renders the best results.

ISEHIRO [Yakitori]

11:00am-2:00pm (last orders 1:30pm) & 5:00pm-9:00pm (last orders 8:30pm)

Location: Arcade fl, The Main bldg.



Premium Una-ju



Breaded Prawn & Crab Croquette



Curry on Rice with Pork Cutlet



Wagyu

Enjoy the view of the Japanese garden while watching expert chefs grill prime wagyu steaks, including the celebrated Kobe beef, and fresh seafood right before your eyes.

SEKISHIN-TEI [Teppanyaki]

11:30am-3:00pm (last orders 1:30pm) & 5:00pm-10:00pm (last orders 8:30pm)

*Closing at 9:00pm (last orders 7:30pm) on weekends *Closed on Mondays (excl holidays) *Reservation required

Location: Japanese Garden



Relish top-quality wagyu steaks including the renowned Kobe beef and Saga beef at a cozy yet genteel steak house as old as the hotel itself.

RIB ROOM [Steak House]

11:30am-2:30pm (last orders 1:30pm) & 5:00pm-9:00pm (last orders 8:00pm)

Location: Arcade fl, The Main bldg.

In June 2025, BELLA VISTA has embraced a new concept and menu offering exquisite viands including wagyu grilled over a combination of charcoal and wood fire, along with select wines and a breathtaking view of the city.

BELLA VISTA [Western Cuisine]

12:00 noon-3:00pm (last orders 2:00pm) & 5:30pm-10:00pm (last orders 8:00pm)

Location: 40th fl, Garden Tower

Sukiyaki and shabu shabu, perhaps two of Japan's most famous beef hot pots, are prepared at your table to be savored steaming hot.

OKAHAN [Sukiyaki & Shabu Shabu]

11:30am-2:30pm (last entry 2:00pm) & 5:00pm-9:00pm (last entry 8:00pm)

Location: Lobby fl, The Main bldg.



Soba, Udon, Ramen & Donburi

Savor aromatic soba noodles and chewy udon noodles with assorted appetizers and desserts by the hotel's Executive Chef Shinsuke Nakajima.

mendokoro NAKAJIMA [Japanese Noodles]

11:30am-2:00pm & 5:00pm-9:00pm (last orders 8:30pm)

Location: Lobby fl, Garden Tower

Several types of Chinese noodles are available at TAIKAN EN, with barbequed pork or the restaurant's specialty shark's fin. Enjoy the harmony of aromatic broth and perfectly-textured noodles.

TAIKAN EN [Chinese Cuisine]

11:30am-3:00pm (last orders 2:30pm)

& 5:00pm-10:00pm

(last orders 9:30pm, 9:00pm for courses)

*Open 11:30am-10:00pm on weekends and holidays

Location: 16th fl, The Main bldg.



Beef Bowl-Ozaki Beef



Dandan Noodles

TAIKAN EN [Chinese Cuisine]



Udon in Curry Soup with Prawn Tempura



Char Siu and Scallion Ramen

SATSUKI [All-day Dining]



Bars

The perfect place to enjoy your favorite drink at the end of the day...



TRADER VIC'S TOKYO BOATHOUSE BAR

TRADER VIC'S TOKYO BOATHOUSE BAR

The BOATHOUSE BAR serves an extensive selection of tropical cocktails including the original Mai Tai, as well as its signature BBQ spareribs and tidbits.
Weekdays: 11:30am-0:00 midnight (last orders 10:15pm for food, 11:15pm for beverages)
Sundays: 4:30pm-10:00pm (last orders 9:00pm)
Saturdays & holidays: 4:30pm-0:00 midnight (last orders 10:15pm for food, 11:15pm for beverages)
Closed on Mondays (excl holidays)
Location: 4th fl, Garden Tower

Bar Capri

The hotel's main bar that offers a wide selection of award-winning original cocktails as well as standard concoctions.
4:00pm-0:00 midnight (last orders 11:00pm for food, 11:30pm for beverages)
Location: Lobby fl, The Main bldg.

SKY BAR

Take in the nightscape of Tokyo with an aperitif or after-dinner cocktail in hand. Snacks and desserts also available.
5:30pm-9:00pm (last orders 8:30pm)
Location: 17th fl, The Main bldg.



Bar Capri



SKY BAR



15 82
TOUR D'ARGENT
T O K Y O

Indulge in authentic French cuisine at its finest at TOUR D'ARGENT TOKYO, the only branch location of the celebrated Parisian establishment with a history of more than four centuries.

Lunch: 12:00 noon-3:30pm (last entry 1:30pm)
Dinner: 5:30pm-10:30pm (last entry 8:00pm)
Closed on Mondays & Tuesdays, dinner only on Wednesdays
Location: Lobby fl, The Main bldg.



TRADER VIC'S
T O K Y O



Taste the world at TRADER VIC'S TOKYO and enjoy the subtle smoky flavors of meats and seafood from our wood-fired ovens, surrounded by a Polynesian decor.
Lunch (weekdays): 11:30am-2:30pm (last entry)
Lunch Buffet (weekends & holidays): 11:30am-3:00pm (last entry 2:30pm)
Dinner: 5:00pm-10:00pm (last orders 8:30pm)
Closed on Mondays (excl holidays)
Location: 4th fl, Garden Tower

Japanese Garden



With a history of more than 400 years, the Japanese Garden at Hotel New Otani Tokyo had in the past been the property of various known samurai lords. The 10-acre ground features several ancient stone lanterns, scarlet bridges over koi ponds, a stone garden, waterfall, as well as a myriad of flowers and rich foliage that bloom or change colors from season to season. While nestled in the heart of this busy city, the quiet and peaceful ambience that enfolds the expanse provides a moment of repose to hotel guests and visitors alike.

Pastries



A generous variety of pastries and breads created by the hotel's Executive Chef Shinsuke Nakajima is available at the cake shop, or as dine-in items at coffee shop SATSUKI.

Patisserie SATSUKI [Cake Shop]
11:00am-8:00pm
Location: Lobby fl, The Main bldg.

*Please inform restaurant staff if you have any food allergies or special preferences. *Hours and other details are subject to change without prior notice.

The New Otani HOTEL NEW OTANI TOKYO

4-1 Kioi-cho, Chiyoda-ku, Tokyo 102-8578, Japan Tel: +81-3-3265-1111 www.newotani.co.jp/en/tokyo/

Dining information

