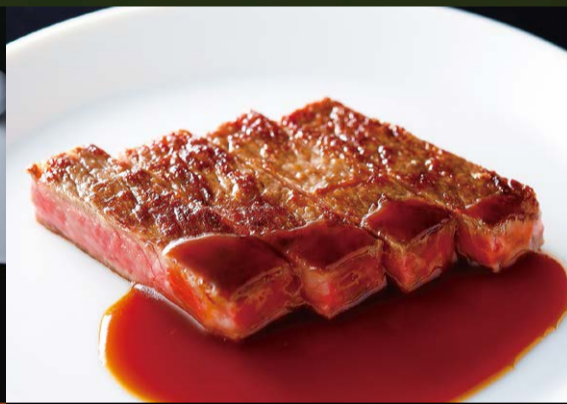


HOTEL NEW OTANI TOKYO

Gastronomic Experiences in Japan



Sushi, Tempura & Teppanyaki

Weekdays: Lunch Buffet ¥9,900 and up / Dinner Buffet ¥15,000 and up

*Prices will vary for weekends and holidays; please inquire.

Enjoy freshly prepared tempura, sushi, teppanyaki and much more from an extensive buffet at this restaurant with a 360° panoramic view.

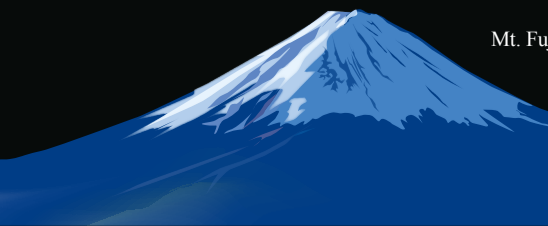
VIEW & DINING THE SKY [Buffet Dining]

Weekdays 11:30am-3:00pm (last entry 1:00pm)
& 5:30pm-9:00pm (last entry 7:00pm)

*Hours differ for weekends and holidays. *A 2-hour limit applies.

Location: 17th fl, The Main bldg.

Mt. Fuji is visible on clear days.





Buffet Dining with a View

Weekdays: Lunch Buffet ¥7,600 and up / Dinner Buffet ¥9,900 and up

*Prices will vary for weekends and holidays; please inquire.

The Tower Restaurant boasts a buffet of delectable and wholesome dishes including New Otani's prided roast beef, plant-based foods, and delights created by our chefs.

TOWER RESTAURANT [Buffet Dining]

Weekdays: 11:30am-1:00pm (last entry) & 5:30pm-7:00pm (last entry)

Closed Mondays & Tuesdays (excl holidays) *Hours are divided into segments, each with a 2-hour time limit.

Location: 40th fl, Garden Tower

The two buffet restaurants at Hotel New Otani Tokyo are both located on high floors and afford breathtaking views. Mt. Fuji is visible on clear days, with the greenery of the State Guest House and the Gaien area presenting a soothing vista by day, and the Tokyo nightscape glittering after dusk. The symbolic Tokyo Skytree can be seen from VIEW & DINING THE SKY.

The Tokyo cityscape against Mt. Fuji



Sushi

Lunch: ¥6,600 and up / Dinner: ¥11,000 and up

Highly acclaimed as one of the best sushi restaurants in Japan, Kyubey serves exquisite sushi prepared according to traditional craftsmanship that is an art in itself.

KYUBEY [Sushi]

11:30am-2:00pm (last entry 1:30pm) & 5:00pm-9:30pm (last entry 9:20pm)

Location: Lobby fl, The Main bldg. & Lobby fl, Garden Tower

Lunch: ¥4,620 and up / Dinner: ¥7,480 and up

Tsukiji Suzutomi presents a sophisticated dining experience with sushi made from carefully selected ingredients including exceptional tuna, in a refined atmosphere.

Tsukiji SUZUTOMI [Sushi]

11:30am-3:00pm (last orders 2:30pm) & 5:00pm-10:00pm (last orders 9:00pm)

Location: 4th fl, Garden Court

Sushi is also available from the buffet at VIEW & DINING THE SKY.
(See cover page for restaurant details.)

Washoku Yoshoku Tempura Yakitori

Una-ju (Broiled Unagi Eel on Rice) Set: ¥11,500 and up

Grilled unagi eels dipped in sweetened soy sauce served on rice is a common source of stamina in Japan.

KATO'S DINING & BAR [Japanese Cuisine]

Available 11:30am-2:00pm & 5:00pm-9:00pm (last orders 8:00pm, 7:00pm for Kaiseki Course)

Location: Lobby fl, Garden Court

Yoshoku Lunch Course: ¥5,500 and up / Dinner Course: ¥16,500 and up

Bella Vista offers "Shin-Edo Yoshoku"—Western dishes with a Japanese flair—refined by incorporating essences of Japanese, French, and Italian cuisines, and prepared with selected local ingredients.

BELLA VISTA [Western Cuisine]

Noon-3:00pm (last orders 2:00pm) & 5:30pm-10:00pm (last orders 8:00pm)

Location: 40th fl, Garden Tower

Yoshoku Items (A la Carte): ¥2,500 and up

Chicken Rice Omelet: ¥2,900 / Curry on Rice with Pork Cutlet: ¥4,400

A wide array of "Yoshoku" dishes are available at SATSUKI, enhanced with high-quality ingredients and unique twists.

SATSUKI [Coffee Shop]

Available 11:00am-11:00pm (last orders 10:30pm)

Location: Lobby fl, The Main bldg.

Kaiseki Lunch: ¥7,700 / Kaiseki Dinner Course: ¥14,300 and up

A long-established restaurant serving authentic traditional Japanese cuisine. Another location stands in the Japanese garden: Nadaman Main Branch Sazanka-so (Reservation required 3 days or more in advance).

Kioi NADAMAN [Japanese Cuisine / Tempura]

Available 11:30am-2:30pm (last orders 2:00pm)

& 5:00pm-9:00pm (last orders 8:00pm, 7:30 for kaiseki courses)

Location: Lobby fl, Garden Tower

Tempura Lunch Set: ¥3,850 and up / Dinner Course: ¥8,800 and up

Tempura is now one of the most well-known Japanese dishes among foreign visitors. Savor fresh seafood and vegetables of the season encrusted in crispy batter.

HORIKAWA [Tempura]

11:30am-3:00pm (last orders 2:30pm) & 5:00pm-9:00pm (last entry & last orders 8:30pm)

*Also open 3:00pm-5:00pm on Sundays and holidays

Location: Lobby fl, The Main bldg.

Yakitori Lunch Set: ¥1,450 and up / Dinner Course: ¥6,600 and up

A yakitori restaurant chain with a history of nearly a century. Select ingredients are grilled with the greatest care over high-quality charcoal that renders the best results.

ISEHIRO [Yakitori]

11:00am-2:00pm (last orders 1:30pm) & 5:00pm-9:00pm (last orders 8:30pm)

*Closed for lunch on Saturdays

Location: Arcade fl, The Main bldg.



Premium Una-ju



Curry on Rice with Pork Cutlet



Wagyu

和牛

Wagyu Course (Teppanyaki): ¥23,500 and up

Enjoy the view of the Japanese garden while watching expert chefs grill prime wagyu steaks, including the celebrated Kobe beef, and fresh seafood right before your eyes.

SEKISHIN-TEI [Teppanyaki]

11:30am-2:00pm (last orders 1:30pm) & 5:00pm-10:00pm (last orders 8:30pm)

*Closing at 9:00pm (last orders 7:30) on weekends *Closed on Mondays (excl holidays) *Reservation required
Location: Japanese Garden



Beef Steak Pilaf

Wagyu Steak: ¥16,500 and up

Relish top-quality wagyu steaks including the renowned Kobe beef and Saga beef at a cozy yet genteel steak house as old as the hotel itself.

RIB ROOM [Steak House]

11:30am-2:00pm (last orders 1:30pm) & 5:00pm-9:00pm (last orders 8:00pm)

Location: Arcade fl, The Main bldg.

Sukiyaki & Shabu Shabu

Lunch: ¥5,500 and up / Dinner Course: ¥13,200 and up

Sukiyaki and shabu shabu, perhaps two of Japan's most famous beef hot pots, are prepared at your table to be savored steaming hot.

OKAHAN [Sukiyaki & Shabu Shabu]

11:30am-2:30pm (last entry 2:00pm) & 5:00pm-9:00pm (last entry 8:00pm)

Location: Lobby fl, The Main bldg.



Soba, Udon, Ramen & Donburi

蕎麦

Lunch Set (Soba or Udon): ¥2,300 and up

Dinner Set (Soba or Udon): ¥4,700 and up

Savor aromatic soba noodles and chewy udon noodles with assorted appetizers and desserts by the hotel's Executive Chef Shinsuke Nakajima.

mendokoro NAKAJIMA [Japanese Noodles]

11:30am-2:00pm & 5:00pm-9:00pm (last orders 8:30pm)

*On Sun & holidays, open for lunch only (11:30am - last orders 3:00pm), except when the next day is a holiday also
Location: Lobby fl, Garden Tower

Fried Noodles with Seafood: ¥2,800

Noodle Soup with Shark's Fin: ¥6,500

Dandan Noodles (Noodle in Spicy Sesame and Peanut Soup): ¥2,200

Several types of Chinese noodles are available, with barbequed pork or the restaurant's specialty shark's fin. Enjoy the harmony of aromatic broth and perfectly-textured noodles.

TAIKAN EN [Chinese Cuisine]

11:30am-3:00pm (last orders 2:30pm)

& 5:00pm-9:00pm (last orders 8:30pm)

*Open 11:30am-9:00pm on weekends and holidays

Location: 16th fl, The Main bldg.



Udon in Curry Soup with Prawn Tempura



Dandan Noodles

TAIKAN EN [Chinese Cuisine]

Ozaki Beef Steak on J-cereal Multigrain Rice: ¥7,400

SATSUKI [Coffee Shop]

Available 11:00am-9:00pm

丼

Bars

The perfect place to enjoy your favorite drink at the end of the day...



TRADER VIC'S TOKYO BOATHOUSE BAR

TRADER VIC'S TOKYO BOATHOUSE BAR

The Boathouse Bar offers you a great selection of tropical Cocktails including our original Mai Tai as well as our famous BBQ spareribs and tidbits.

Weekdays: 11:30am-10:00pm (last orders 9:00pm)

Weekends & holidays: 5:00pm-10:00pm (last orders 9:00pm)

Closed on Mondays (excl holidays)

Location: 4th fl, Garden Tower

Bar Capri

The hotel's main bar that offers a wide selection of award-winning original cocktails as well as standard concoctions.

Weekdays: 4:00pm-11:00pm (last orders 10:30pm)

Weekends & holidays: 1:00pm-11:00pm (last orders 10:30pm)

Location: Lobby fl, The Main bldg.

SKY BAR

Take in the nightscape of Tokyo with an aperitif or after-dinner cocktail in hand. Snacks and desserts also available.

5:30pm-9:00pm (last orders 8:30pm)

Location: 17th fl, The Main bldg.



Bar Capri



SKY BAR



15 82
TOUR D'ARGENT
TOKYO

Indulge in authentic French cuisine at its finest at Tour d'Argent Tokyo, the only branch location of the celebrated Parisian establishment with a history of more than four centuries.

Lunch: Noon-3:30pm (last entry 1:30pm)

Dinner: 5:30pm-10:30pm (last entry 8:00pm)

Closed on Mondays & Tuesdays

Location: Lobby fl, The Main bldg.



TRADER VIC'S
TOKYO



Taste the world at Trader Vic's and enjoy the subtle smoky flavors imparted by our Chinese wood-fired ovens surrounded by a polynesian decor.

Lunch (weekdays): 11:30am-3:00pm (last entry 2:30pm)

Lunch Buffet (weekends & holidays): 11:30am-3:00pm

Dinner: 5:00pm-10:00pm (last orders 8:30pm)

Closed on Mondays (excl holidays)

Location: 4th fl, Garden Tower

Japanese Garden



With a history of more than 400 years, the Japanese Garden at Hotel New Otani Tokyo had in the past been the property of various known samurai lords. The 10-acre ground features several ancient stone lanterns, scarlet bridges over koi ponds, a stone garden, waterfall, as well as a myriad of flowers and rich foliage that bloom or change colors from season to season. While nestled in the heart of this busy city, the quiet and peaceful ambience that enfolds the expanse provides a moment of repose to hotel guests and visitors alike.

Pastries



A generous variety of pastries and breads created by the hotel's Executive Chef Shinsuke Nakajima is available at the cake shop, or as dine-in items at coffee shop SATSUKI.

Melon Shortcake: ¥1,836

Patisserie SATSUKI [Cake Shop]

11:00am-8:00pm

Location: Lobby fl, The Main bldg.

*All prices are tax inclusive, and are subject to service charge excluding takeaway items. *Please inform restaurant staff if you have any food allergies or special preferences.

*Prices and menu items are subject to change, including during certain holiday seasons and events.

The New Otani HOTEL NEW OTANI TOKYO

4-1 Kioi-cho, Chiyoda-ku, Tokyo 102-8578, Japan Tel: +81-3-3265-1111 www.newotani.co.jp/en/tokyo/

Dining information

