



HOTEL NEW OTANI TOKYO

Your Best Choice for a Successful Event



The New Otani



HOTEL NEW OTANI TOKYO



Hotel New Otani Tokyo opened in 1964 to welcome guests visiting our city for the 18th Olympic Games. Since then, it has led the hotel industry in our country, serving as the main venue for three G7 Summit meetings and welcoming dignitaries from around the world. With a diverse selection of guest rooms, 37 restaurants and bars, 33 banquet rooms, shopping arcades, and first-class service and hospitality, Hotel New Otani Tokyo offers the best platform to lead your event to success.



During construction, 1964



At the time of opening in 1964



The 12th G7 Summit Meeting, 1986



Official Dinner, Imperial Enthronement Ceremony, 1990



Official Dinner, Imperial Enthronement Ceremony, 2019

JAPANESE GARDEN

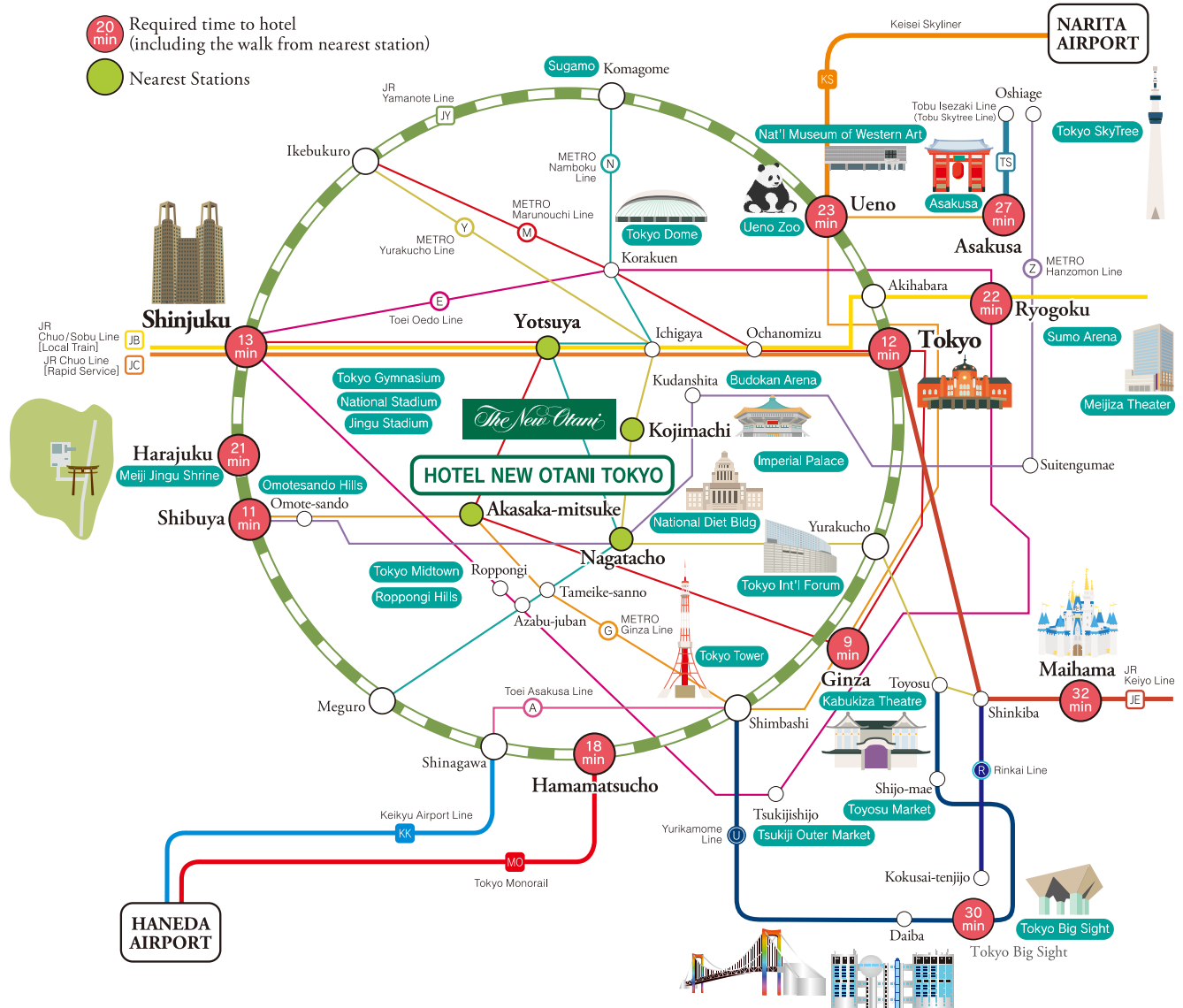


The hotel's 10-acre Japanese garden boasts a history of more than 400 years, and in the past has been the property of prominent samurai lords. Despite its location in the center of Tokyo, the garden's six-meter-high waterfall, koi pond, verdant trees and seasonal flowers offer a moment of serenity and repose to those who stroll its paths.

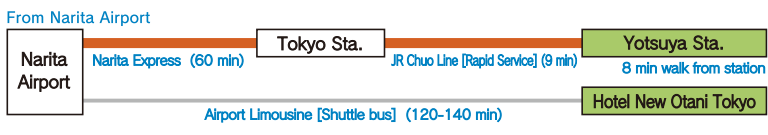
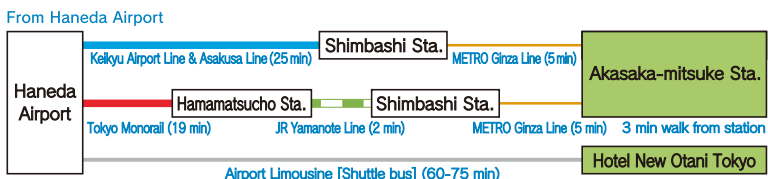
Nighttime Illumination: from 30 minutes before sunset to midnight

Access

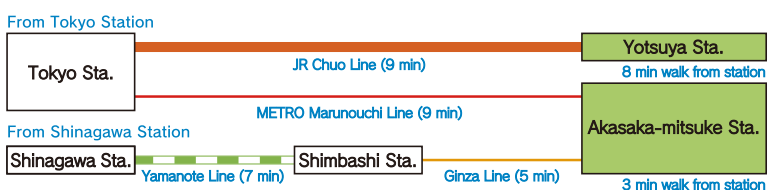
Hotel New Otani Tokyo is located in the center of the city, with four stations on seven railway lines nearby providing convenient access to areas throughout Tokyo.



Access from Airports



Access by Shinkansen (bullet train)



Access by taxi



Nearest Stations
 [Akasaka-mitsuke] METRO Ginza & Marunouchi Lines, 3 min
 [Nagatacho] METRO Hanzomon & Namboku Lines, 3 min
 [Yotsuya] JR Chuo & Sobu Lines, METRO Marunouchi & Namboku Lines, 8 min
 [Kojimachi] METRO Yurakucho Line, 6 min



P Parking
 A total of 760 parking spaces are available within the complex. (Normal fee ¥500/30 min, free of charge for staying guests.)
 Bus spaces also available. (Outside The Main building.)
 (Loading/unloading area also located outside the Garden Tower.)

Location

Hotel New Otani Tokyo is surrounded by four major areas within the city, each with distinctive characteristics and all within walking distance.



Akasaka Area

Places of Interest

Hie Shrine, Akasaka Sacas (theaters, restaurants, and shops), etc.

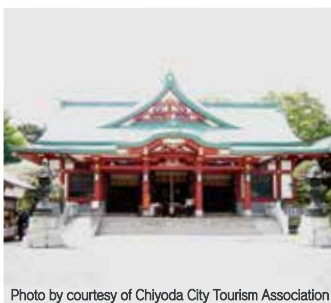


Photo by courtesy of Chiyoda City Tourism Association
Hie Shrine

Yotsuya Area

Places of Interest

State Guest House, Akasaka Palace, etc.



State Guest House

Nagatacho Area

Places of Interest

National Diet Building, National Theater, etc.



Photo by courtesy of Chiyoda City Tourism Association
National Diet Building

Kojimachi Area

Places of Interest

Shimizudani Park, Imperial Palace, etc.



Imperial Palace (Chidorigafuchi Moat)

The history of Kioi-cho

The area where Hotel New Otani Tokyo stands is known as a historic neighborhood where three prominent samurai families once resided. Many historic sites are located in the vicinity, and the hotel's onsite Japanese garden showcases numerous ancient stone lanterns and tree fossils.



The Kioi-cho area on a map printed in 1685
Edo Ooezu, published by Suharaya Mohei

Facilities

A multitude of shops, services and facilities enrich the guests' stay.

The hotel complex is like a town in itself, with innumerable facilities and things to do



The outdoor Garden Pool is one of the largest hotel pools in central Tokyo and opens during the summer and holidays in early May. Private events can be held on certain days.



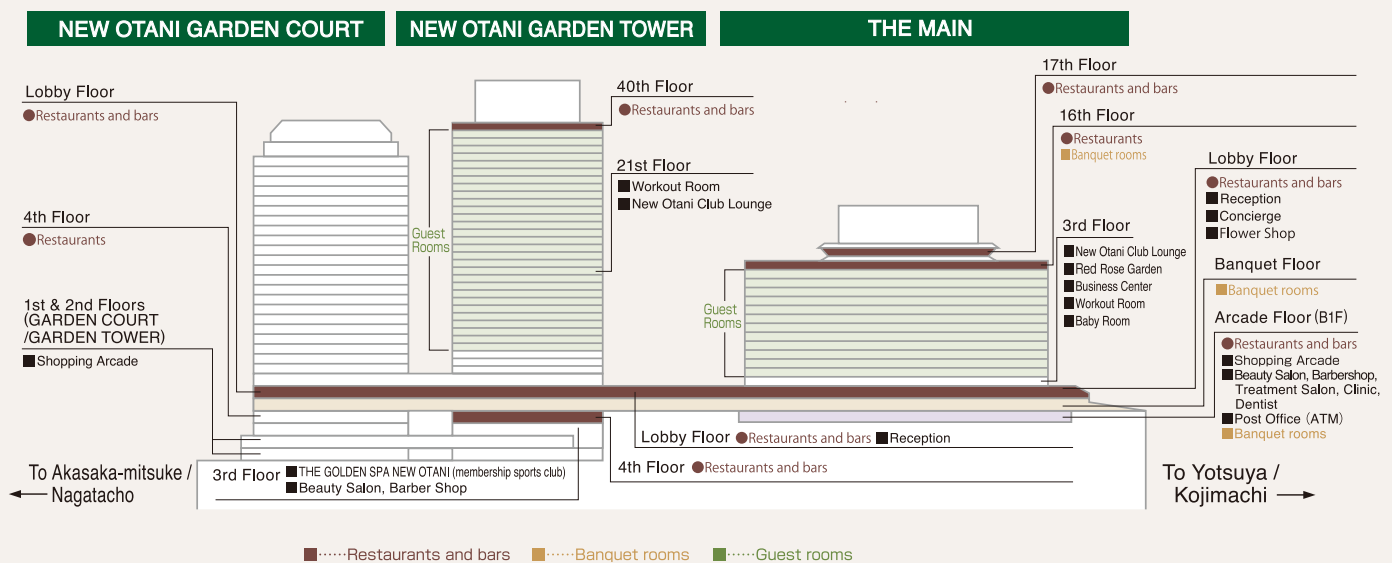
There are medical/dental clinics on-site, as well as drug stores.



A grocery store and convenience store within the hotel offer groceries including ready-to-eat "bento" meals, perishable and processed foods, beverages, and other daily necessities.



There is a post office with an ATM that dispenses Japanese yen from your overseas bank account.



Eco-friendliness, safety, and comfort are all part of New Otani's hospitality



Seismic Upgrade

The Main building, renovated in 2007, as well as the Garden Tower and Garden Court, are all evaluated by certified experts to have the seismic adequacy to withstand earthquakes of upper 6.

Well Water Plant

Abundant groundwater drawn from within premises of the hotel is purified to drinkable quality at an advanced water treatment plant installed in 2009. The plant has a daily capacity of 350 tons, which amounts to three days' worth of drinking water for 9,700 households, and is commissioned by the local government to contribute in times of disasters.

Compost Plant

Our kitchens produce up to five tons of raw refuse every day, all of which is recycled into compost at this on-site plant installed in 1999. The compost is then used at our partner farms to grow vegetables, which return to the kitchen of our employee cafeteria as ingredients, thus completing the recycle chain.

Water Recycling Plant

This plant produces 1,000 tons of recycled water daily from kitchen sewage water, which is utilized in gardens or staff lavatories. Since its installation, consumption of tap water has significantly reduced, thus alleviating the environmental burden.



Wooden Water Tanks

Water tanks made from 7cm-thick American cypress wood planks are installed throughout the Hotel to supply water to guest rooms and restaurants. Their natural antibacterial quality produces safe and clear-tasting water.

Medical Facilities

The hotel complex houses various clinics, a dentist, and a pharmacist that can deal with minor medical emergencies. For extreme emergencies, the assistant manager is on duty around the clock and will provide necessary assistance according to the situation.

Health and Beauty

A workout room with exercise equipment is open to staying guests free of charge. A sports club, spa, aesthetic salons, hair and nail salons are also within the building. The nearby area that includes the Imperial Palace and State Guest House is popular among those who enjoy jogging.

A Wide Array of Facilities

A convenience store, post office with an ATM, florist shop, and an extensive assortment of other facilities offer an even more comfortable and pleasant stay.

Guest Rooms

Three diverse domains house a multitude of room types that cater to each and every need.

*More room types are available. Please inquire. *Twin-bed rooms are also available in each category.



EXECUTIVE HOUSE ZEN

Ultimate luxury in harmony with nature

EXECUTIVE HOUSE ZEN is located on the 11th and 12th floors of “THE MAIN” building at Hotel New Otani Tokyo. The fundamental design of sophisticated décor is guided by the spirit of Zen—awakening one’s inner nature, compassion and wisdom. The “savoir-faire” of our experienced staff will welcome every guest with warm-hearted hospitality.



Garden Suite MUSOU-AN (115m²/1,237.9ft²)

Deluxe



45m²/484.3ft² and up



Suites



67m²/721.1ft² and up



Standard



36m²/387.5ft²



*Room layouts and décor vary.

Hospitality at EXECUTIVE HOUSE ZEN

- Exclusive check in & out at the ZEN Lounge
- Exclusive concierge services and 24-hour hotline support



- Complimentary use of membership sports club “The Golden Spa New Otani”
- Free parking in specially reserved areas
- Complimentary use of conference rooms in the Business Center (2 hours)

- Complimentary drinks & light meals in the ZEN Lounge
- Exquisite items that form the core of Hotel New Otani Tokyo's dining experience are offered buffet style, six times a day.



Breakfast
8:00 am-10:00 am

Lunch
Noon-2:00 pm

Hors d'Oeuvres
5:30 pm-8:00 pm

Morning Snack
10:00 am-Noon

Afternoon Tea
2:30 pm-4:30 pm

Nightcap and Chocolates
8:00 pm-9:30 pm



In Forbes Travel Guide 2024, EXECUTIVE HOUSE ZEN is honored with five stars and "The Main" with four stars. Hotel New Otani Tokyo is committed to offering a safe and comfortable experience to all guests who stay or dine with us, or visit our facilities, and qualifies for international hygiene standards "Sharecare Health Security VERIFIED™ with Forbes Travel Guide" and "GBAC STAR™ Accreditation".



THE MAIN

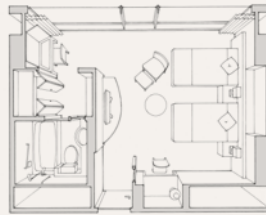
Experience true comfort in first-class hospitality and service founded on a long-established tradition.



Standard

36m²/387.5ft²

The full-height windows offer stunning views that include the State Guest House and our Japanese garden.



Quality Double



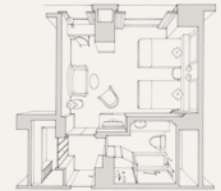
26m²/279.8ft²



Deluxe



45m²/484.3ft² and up



Suites



71m²/764.2ft² and up



*Room layouts and décor vary.

Shin-Edo Rooms

All rooms are equipped with a cypress-wood bathtub that emanates a relaxing aroma. Experience Japanese hospitality enriched with tradition and culture.



"Shin-Edo" Premium Suite

128m²/1,378ft²

The Premium Suite accommodates up to four persons by connecting the "Shin-Edo" Suite and adjacent room.



"Shin-Edo" Single Room



26m²/279.9ft²



"Shin-Edo" Standard Room



36m²/387.5ft²



"Shin-Edo" Deluxe Room



45m²/484.4ft²



Guest Rooms

*Twin-bed rooms are also available in each category.



NEW OTANI GARDEN TOWER

Modern comfort and a view from the high-rise offer a moment of relaxation.



Deluxe

50.2m²/540.3ft² and up

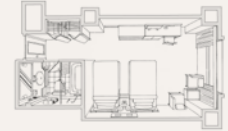
Equipped with oversized beds and boast breathtaking cityscape views.



Standard



27.3m²/293.8ft²



Standard (Triple)



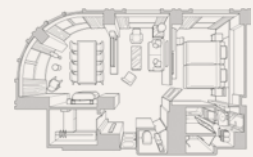
39.7m²/427.3ft²



Suites



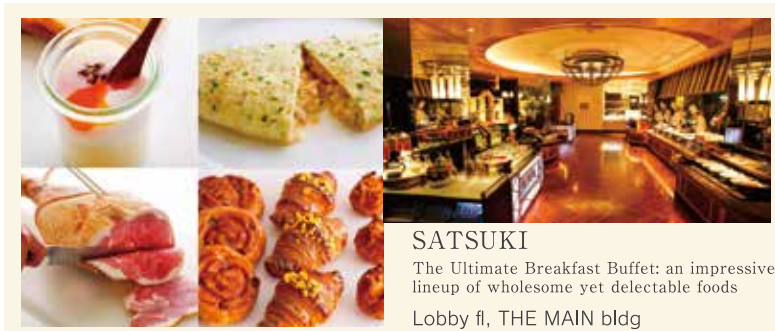
74.7m²/804ft² and up



*Room layouts and décor vary.

Start your day with the breakfast of your choice

Breakfast is offered at four restaurants and also through room service



SATSUKI

The Ultimate Breakfast Buffet: an impressive lineup of wholesome yet delectable foods

Lobby fl, THE MAIN bldg



Room Service

Charge up for the day with an elegant breakfast in the serene privacy of your room



TOWER RESTAURANT

Breakfast with a View: the perfect way to start off your day

40th fl, GARDEN TOWER



Kioi NADAMAN

Authentic Japanese breakfast rich with tradition and taste

Lobby fl, GARDEN TOWER



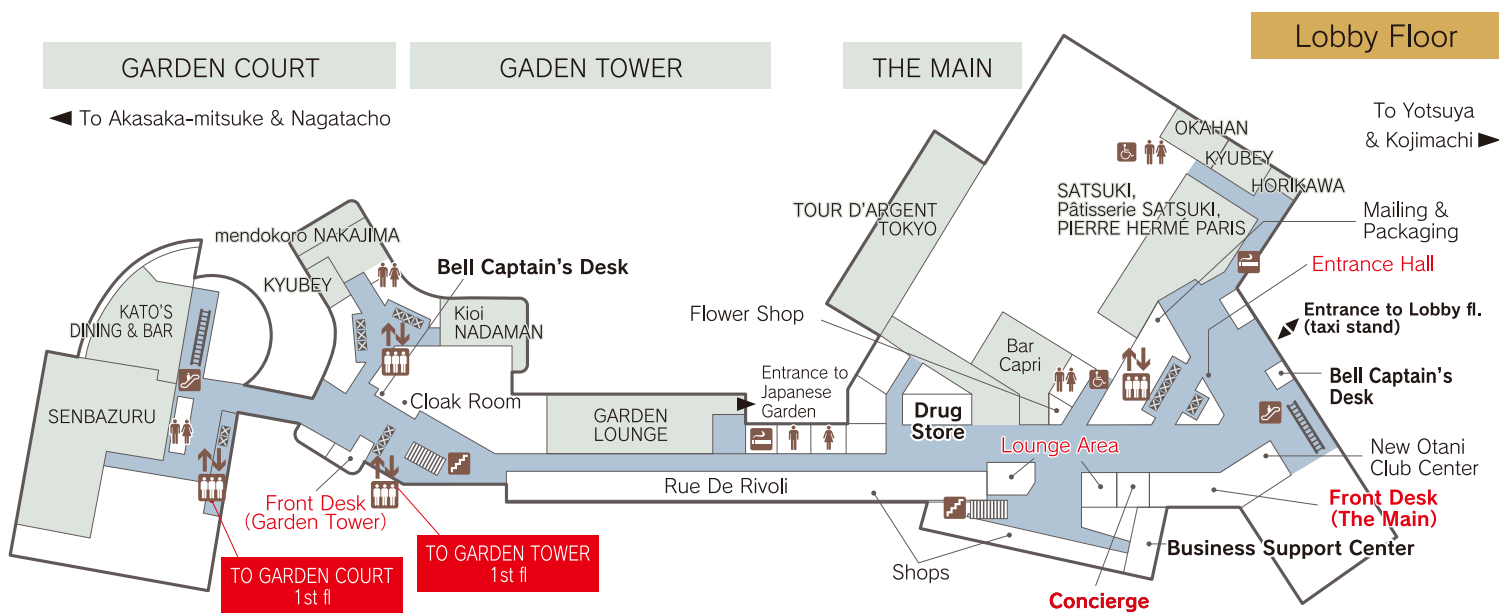
Garden Lounge

Relax in the tranquil ambience generated by the view of the Japanese Garden

Lobby fl, GARDEN TOWER

Guest Services & Facilities

A multitude of convenient services and facilities enrich your stay



Garden Tower Front Desk

Open 6:00am-0:00 midnight
Also available to guests staying in The Main building.



Concierge

The concierge desk provides support to staying guests including tourist information, arrangements for tickets and reservations, etc., in various languages.



Lounge Area

A sofa lounge is located near the front desk where guests can sit down while waiting, etc.



The Main Building Front Desk

Open 24 hours
Also available to guests staying in the Garden Tower.



Entrance Hall

Seasonal ikebana arrangements by the Sogetsu school greet the guests.

THE GOLDEN SPA NEW OTANI

(3rd fl, GARDEN TOWER)

Staying guests are welcome to the membership sports club THE GOLDEN SPA NEW OTANI for a visitors' fee. (Free of charge for guests of EXECUTIVE HOUSE ZEN.)

Pool & gym: weekdays 7:00am-9:45pm
weekends & holidays 10:00am-8:45pm

Sauna: weekdays 7:00am-10:00pm
weekends & holidays 10:00am-9:00pm



Indoor Pool



Dry Sauna



BLACK GYM

Workout Room

(3rd fl, THE MAIN bldg & 21st fl, GARDEN TOWER)

Various exercise equipment are available to staying guests free of charge.

THE MAIN bldg: 5:00am-10:00pm

GARDEN TOWER: 6:00am-9:00pm



Workout Room (THE MAIN bldg)



Workout Room (GARDEN TOWER)

Business Center (3rd fl, THE MAIN bldg)

Conference rooms (separate fee required) and workstations with PCs (free of charge) are available to staying guests only.

Conference rooms: 10:00am-6:00pm

Workstations: weekdays 8:00am-9:00pm / weekends and holidays 9:00am-5:00pm

Meetings & Banquets

A total of 33 banquet venues of various sizes cater to various events, from international conventions to small gatherings



Tsuru



Fuyo



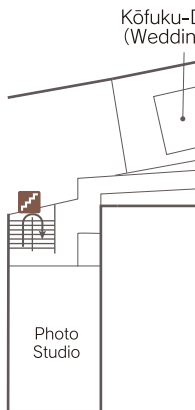
HŌ

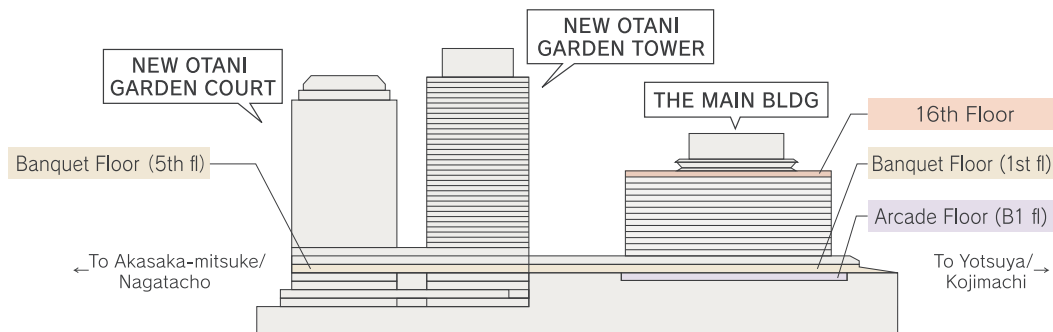


LAPIS 1, 2, 3



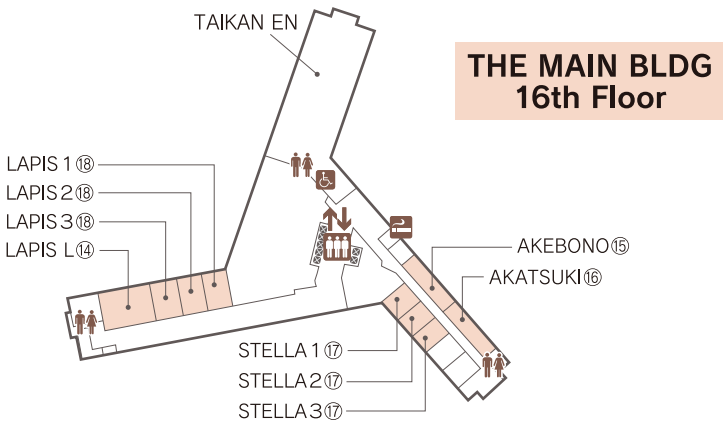
PALAZZO OTANI/AZALEA





Large-size Banquet Rooms

Name	Location	Space (m ²)	Ceiling Height (m)	Capacity			
				Seated	Buffet	Classroom	Theater
Tsuru ①	Total	1,992	—	1,150	2,500	1,200	2,184
	East	850	5.7	400	800	504	1,023
	West	965	5.7	540	1,100	560	1,200
	(Foyer)	460	3.2	—	—	—	—
Fuyo ②	Total	1,124	—	630	1,500	784	1,404
	East	317	7.6	160	200	192	340
	Central	490	7.6	250	350	336	544
	West	317	7.6	160	200	192	340
	(Foyer)	625	2.9	—	—	—	—
HŌ ③	Total	722	—	420	500	540	1,014
	East & Central	462	4.2	260	350	310	585
	East/West	234	4.2	110	140	126	240
	Central	217	4.2	90	130	112	220
	(Foyer)	151	3.6	—	—	—	—



Banquet Floor

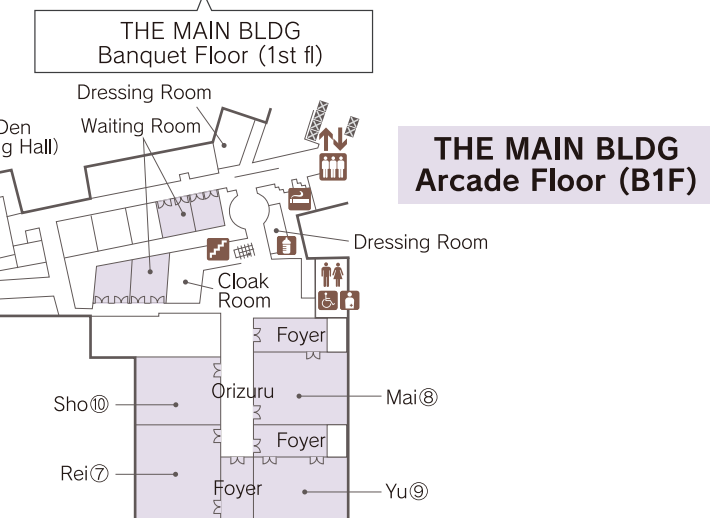


Medium-size Banquet Rooms

Name	Location	Space (m ²)	Ceiling Height (m)	Capacity			
				Seated	Buffet	Classroom	Theater
PALAZZO OTANI	Total	340	3.2	160	220	192	320
	AZALEA ④	170	3.2	80	100	88	170
	ACERO ⑤	170	3.2	80	100	88	170
	edo ROOM ⑥	232	3.3	100	150	150	280
Orizuru	Rei ⑦	314	3.0	180	230	200	360
	Mai ⑧	256	3.0	140	150	160	300
	Yu ⑨	243	3.0	110	140	152	270
	Sho ⑩	217	3.0	110	130	128	240
Suihō ⑪	GARDEN TOWER Banquet Floor	267	3.1	130	150	200	286
Sirius ⑫	GARDEN COURT Banquet Floor	229	3.3	100	140	124	215
Aries ⑬	GARDEN COURT Banquet Floor	180	3.4	70	120	102	175
LAPIS L ⑭	THE MAIN bldg 16th Floor	147	2.2	60	80	60	100

Small-size Banquet Rooms

Name	Location	Space (m ²)	Ceiling Height (m)	Capacity			
				Seated	Buffet	Classroom	Theater
AKEBONO ⑮/AKATSUKI ⑯	THE MAIN bldg 16th Floor	63	2.2	10	—	—	—
STELLA ⑰	1/2/3	46	2.2	10	—	16	30
LAPIS ⑱	1/2/3	73	2.2	30	40	32	60
Sakura ⑲	THE MAIN bldg Banquet Floor	89	3.0	—	—	—	—
Tsubaki ⑳	THE MAIN bldg Banquet Floor	65	3.0	—	—	—	—
Tachibana ㉑	THE MAIN bldg Banquet Floor	164	3.0	—	—	—	—
Kiku ㉒	THE MAIN bldg Banquet Floor	68	3.0	16	—	—	—
Suisen ㉓	GARDEN TOWER Banquet Floor	58	3.0	30	40	28	50
Asebi ㉔	GARDEN TOWER Banquet Floor	49	3.0	20	—	18	40
Yamabuki ㉕	GARDEN TOWER Banquet Floor	85	3.0	30	40	40	60
Crescent ㉖	GARDEN TOWER Banquet Floor	79	3.0	30	40	52	82
Board Room ㉗	GARDEN TOWER Banquet Floor	66	3.0	30	30	40	70
Summit East ㉘	GARDEN TOWER Banquet Floor	40	3.0	10	—	—	—
Summit West ㉙	GARDEN TOWER Banquet Floor	40	3.0	10	—	—	—



Garden Pool

Name	Location	Space (m ²)	Capacity
GARDEN POOL ⑳	Japanese Garden	2,000	50~250

Restaurants & Bars

A total of 37 restaurants and bars offer diverse dining experiences including Japanese, Western, and Chinese cuisines.

*Private rooms require separate charges

Western Cuisine

French Cuisine 
TOUR D'ARGENT TOKYO



The one and only branch location of the esteemed Parisian establishment
Lobby fl, THE MAIN bldg
Closed on Mondays and Tuesdays
Private room: 1 (max 30 persons)

International Cuisine 
TRADER VIC'S TOKYO




Enjoy dishes from around the world and tropical concoctions
4th fl, GARDEN TOWER
Private rooms: 5
(seated 4-60, standing buffet max 80 persons)

Western Cuisine 
BELLA VISTA



Indulge in exquisite dishes with the view from the 40th floor
40th fl, GARDEN TOWER
Private rooms: 2 (6-14 persons)

International Cuisine  Tenant Restaurant
GUN-SHIP



Set sail on a gourmet voyage of delectable cuisine from around the world in a nautical theme decor
4th fl, GARDEN COURT
Private rooms: 6 (4-80 persons)

Western Cuisine 
French Restaurant, Café & Bakery Tenant Restaurant
AUX BACCHANALES



A stylish brasserie facing the park, offering casual Parisian esprit and home style French cuisine
1st fl, Shin-Kioicho bldg
Private room: 1 (15-30 persons)

Buffet 
Buffet & Bar 
VIEW & DINING THE SKY



Take in the 360-degree panorama of Tokyo and an extensive buffet of freshly prepared items
17th fl, THE MAIN bldg
Private rooms: 2 (2-8 persons)

Buffet Dining 
TOWER RESTAURANT



A delightful buffet and a breathtaking view from the 40th floor
40th fl, GARDEN TOWER

Chinese Cuisine 
Chinese Cuisine 
TAIKAN EN



Delight in the genuine taste of Shanghai that has been fascinating gastronomists ever since 1964
16th fl, THE MAIN bldg
Private rooms: 5 (6-36 persons)

Steak House/Teppanyaki 
Teppanyaki 
SEKISHIN-TEI



A counter-style restaurant within the Japanese garden offering prime beef and seafood
Within Japanese garden
(24 seats)

Teppanyaki/Steak House 
Teppanyaki 
SEISEN-TEI



Succulent beef and fresh seafood prepared right at your table overlooking a koi pond
Within Japanese garden
(18 seats)

Teppanyaki 
MOMIJI-TEI



Enjoy select beef and seafood prepared in the spacious dining room that is ideal for large groups
Within Japanese garden
(40 seats)

Steak House 
RIB ROOM



Wagyu steaks grilled to sizzling perfection at a genteel steak house as old as the hotel itself
Arcade fl, THE MAIN bldg

Japanese Cuisine 
Japanese Cuisine (Kaiseki) 
SENBAZURU



Elaborately-prepared seasonal delicacies and traditional service
Lobby fl, GARDEN COURT
Private rooms: 5 (2-20 persons)

Japanese Cuisine 
KATO'S DINING & BAR



Authentic Japanese cuisine and an extensive selection of sake
Lobby fl, GARDEN COURT
Private rooms: 3 (2-20 persons)

Japanese Noodles 
mendokoro NAKAJIMA



Traditional yet innovative soba and udon dishes and delicacies sought out from all over Japan
Lobby fl, GARDEN TOWER

Japanese Cuisine (Kaiseki)  Tenant Restaurant
NADAMAN MAIN BRANCH SAZANKA-SO



A time-established restaurant that hosted the official dinner of the 1986 G7 Summit
Within Japanese garden
Private rooms: 5 (4-20 persons)

Japanese Cuisine 
Japanese Cuisine/Tempura  Tenant Restaurant
Kioi NADAMAN



Traditional Japanese cuisine, original creations, and a generous view of the Japanese Garden
Lobby fl, GARDEN TOWER
Private rooms: 6 (2-40 persons)

Tempura  Tenant Restaurant
HORIKAWA



The best of traditional tempura made with fresh seafood and vegetables and specially selected oil
Lobby fl, THE MAIN bldg
Private room: 1 (6-10 persons)

Japanese Cuisine  Tenant Restaurant
RANSEN



Watch the culinary craftsmanship of chefs at work, using select foods from around the country
Arcade fl, THE MAIN bldg
Private rooms: 3 (4-12 persons, course order required)

Sukiyaki & Shabu Shabu  Tenant Restaurant
OKAHAN



Traditional sukiyaki and shabu shabu prepared with top quality beef
Lobby fl, THE MAIN bldg
Private rooms: 5 (1-35 persons)

Japanese Cuisine

Sushi  **KYUBEY**



Discover the art of sushi at this acclaimed restaurant known as one of the best in Japan
Lobby fl, THE MAIN bldg / Lobby fl, GARDEN TOWER
Private room: 1 (4 persons, Garden Tower branch)

Sushi  **TSUKIJI SUZUTOMI**




Offers sushi made from select ingredients including exceptional tuna, in a refined atmosphere
4th fl, GARDEN COURT
Private room: 1 (4-18 persons)

Tonkatsu, Japanese Cuisine  **FUMIZEN**



Savor the flavors and textures of expertly-made "tonkatsu" and Japanese fare
Arcade fl, THE MAIN bldg

Soba & Eel  **NIIZU**



Grilled "unagi" eels with a rich flavor and soft texture, and fresh-made "soba" noodles
Arcade fl, THE MAIN bldg

Japanese Cuisine  Yakitori **ISEHIRO**



A branch of a time-honored "yakitori" restaurant
Arcade fl, THE MAIN bldg
Private room: 1 (4 persons)

Cafe & Lounges  Coffee Shop **SATSUKI**




A selection of carefully prepared items offered from breakfast to dinner or a late evening snack
Lobby fl, THE MAIN bldg

Tea & Cocktails  **GARDEN LOUNGE**



A spacious and open lounge with a breathtaking view of the Japanese garden
Lobby fl, GARDEN TOWER

Pizza & Café  **TOM CAT**



Offers pastas, pizzas, curries, and appetizers in a casual and modern atmosphere
Arcade fl, THE MAIN bldg
Private rooms: 2 (8-34 persons)

Cafe & Lounges  Café **PESHAWORL**



A quaint and cozy coffee shop furnished with antique pieces, serving nel drip French roast coffee
Arcade fl, THE MAIN bldg

Café  **CaFé LA MILLE**



Sit back in the warm décor with a cup of expertly-brewed aromatic coffee and delicate cakes
2nd fl, GARDEN TOWER

Café  **MILK HALL**



A food-court style restaurant offering ramen, pastas, curries, and set meals at affordable prices
4th fl, GARDEN COURT
Closed on weekends and holidays

Café  **TULLY'S COFFEE**



A selection of gourmet coffees from around the world, pastries, sandwiches, and sweets
2nd fl, GARDEN COURT

Bar  **Bar Capri**



Expressionist paintings by Paul Aizpiri adorn the walls and live piano music entertains the patrons
Lobby fl, THE MAIN bldg
Private rooms: 2 (10-35 persons)

Café & Bar  **TOWER CAFÉ**



Indulge in an evening in style with a spectacular view from the top floor of the Garden Tower
40th fl, GARDEN TOWER

Bar  **sky BAR**



Take in the glittering nightscape of Tokyo with an aperitif or after-dinner drink
17th fl, THE MAIN bldg

Bar  **TRADER VIC'S TOKYO BOATHOUSE BAR**



Choose from more than 80 concoctions of tropical drinks including the original Mai Tai
4th fl, GARDEN TOWER

Bar  Dining Bar **KATO'S DINING & BAR**



A stylish bar with Japanese design elements and a serene ambience
Lobby fl, GARDEN COURT

Bar  **RANSEN HANARE**



Indulge in sommelier-selected wines and Japanese dishes in the tasteful wood and stone décor
Arcade fl, THE MAIN bldg
Closed on Sundays and Mondays

Pastry  Bread & Cake **Patisserie SATSUKI**



Cakes and breads created by Hotel New Otani's Executive Chef Shinsuke Nakajima
Lobby fl, THE MAIN bldg

French Patisserie  **PIERRE HERMÉ PARIS**



The first-ever pastry boutique of the renowned PIERRE HERMÉ PARIS
Lobby fl, THE MAIN bldg

Seasonal Attractions at Hotel New Otani Tokyo

Our 400-year-old Japanese Garden is rich with flowers and foliage that bloom and change colors by the season. Events are held from time to time.

Events

March	April	May	June	July	August	September	October	November	December	January	February
		GARDEN POOL		GARDEN POOL				Exterior Illumination			
	Golden Week Holiday Events			Night Pool				Christmas Tree Decoration			
Sakura Events		Red Rose Garden			Summer Events			Christmas Events		New Year's Events	
			●Sanno Matsuri (Hie Shrine) *One of Japan's three major festivals held in Tokyo			●Jingugaien Fireworks Festival					

Japanese garden

March	April	May	June	July	August	September	October	November	December	January	February
Cherry Blossoms		Rhododendron	Hydrangea	Crepe Myrtle		Sasanqua Camellia		Autumn Foliage			
Camellia		Satsuki Azalea & Sweet Flag				Japanese Clover & Silver Grass		Camellia Hiemalis			
	Azalea										

Two trees in the garden, a Japanese Nutmeg and Yew Plum Pine, are assessed to be over 200 years old, and have been designated by the Chiyoda ward as Natural Treasures.

Nighttime illumination supervised by globally-renowned lighting artist Motoko Ishii is on show after dark in the Japanese garden around the year.
(Nighttime illumination: from 30 minutes before sunset to midnight)



During the cherry blossom season, the lobby and restaurants are also decorated with fresh cherry branches. Nearly 20 breeds of cherry bloom at slightly different timings in the Japanese garden, such as the weeping cherry (late March to early April), Yoshino cherry (late March to early April), and yaezakura (late April to early May), so viewers can appreciate their beauty for a longer period.

The 2,000m² outdoor Garden Pool is equipped with three pools of various depths that may be enjoyed by guests of all ages, offering a tropical resort ambience by day and a stylish night scene after dusk. During off-season periods, the poolside can be used as a venue for client parties, weddings, press events, etc.

The historic 10-acre garden starts to display signs of autumn from mid-November, with the leaves turning bright red, orange, and yellow, and the feathery plumes of silver grass swaying in the wind. The restaurants within the hotel offer rich blessings of the harvest season such as chestnuts and matsutake mushrooms.

From November to February, the perimeter of the hotel is adorned with over 130 thousand fairy lights that shine and glitter through the clear winter air. During the holiday period, more than 30 decorated trees of various sizes and themes boost the festive mood throughout the grounds and in the lobby and restaurants.



Hotel New Otani Tokyo, Hotel New Otani Makuhari, Hotel New Otani Osaka, New Otani Inn Sapporo, Hotel New Otani Nagaoka, NASPA New Otani (Echigo Yuzawa), Yuzawa New Otani, New Otani Inn Tokyo (Osaki), New Otani Inn Yokohama Premium, Hotel New Otani Takaoka, Hotel New Otani Tottori, Hotel New Otani Hakata, Hotel New Otani Saga, Hotel New Otani Chang Fu Gong (Beijing)

Associate Hotels

The Italia-Ken (Niigata), Kanazawa New Grand Hotel, Hotel New Omi (Omi-hachiman)



www.newotani.co.jp/en/

4-1 KIOI-CHO, CHIYODA-KU, TOKYO 102-8578, JAPAN Tel: (03)3265-1111

Information in this brochure is as of March 2024. 202403TE1000